

## DID YOU ENJOY THE BENEFITS OF PROPANE THIS WINTER?

It's hard to believe that another winter season is already behind us. This winter certainly challenged the record books, especially the period January through March. This 3 month period was one of the coldest on record for our area. I trust all of you enjoyed the comfort of propane heating during the cold winter months. If you were without the comforts of propane heating or feel your current heating system is not performing to your satisfaction, Dan or Lenny in our sales/service departments would love to offer assistance.

As many of our customers have experienced, propane offers numerous benefits over other heating methods (ie. oil, electric resistance and heat pumps). The "total life" cost of propane powered equipment is less and burns much cleaner than oil, electric resistance and/or heat pumps. If you are considering updating your central heating and cooling system, adding a propane fireplace, replacing an existing water heater, or running a gas line to a grill, generator, cooking stove or gas dryer, we ask that you give our service department a call. We have qualified service techs like

Adam (see page 2), who enjoy satisfying the needs of our customers and exceeding expectations.

I would also like to point you to our article that discusses the benefits of heating your home's domestic hot water with propane (see page 3). I'm sure you will find this information valuable if you are considering replacing your existing water heater. Remember, propane, is an extremely versatile and clean fuel. The options are almost endless if you choose propane. Give us a call. We would love to discuss the benefits of propane with you.



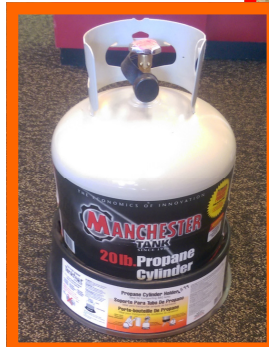
We appreciate your continued business and look forward to serving your propane needs for years to come. Have a blessed summer!

Warm Regards,

*Bryce Ressler* - General Manager

## GRILL CYLINDER SAFETY

Properly transport & store gas cylinders. When refilling or replacing a propane cylinder, transport in a secure, upright (vertical) position in a well-ventilated area in your vehicle, and take it home immediately. We sell propane cylinder holders specifically made for grill tanks and making transportation safer and simpler. Always use or store cylinders in a secure and upright position outdoors (not in a garage or shed).



## BEHIND THE SCENE...ADAM ERB

Adam Erb is one of the newest employees of **Ressler Propane**, but his experience is an asset to many areas of our operation. After working for several years in the landscaping business, Adam began his career with **Ressler Propane** in 2014. Working primarily as a service technician, Adam performs equipment installations, tank installations, tank moves and pick-ups, as well as residential deliveries. When large propane deliveries are requested, Adam is often behind the wheel of the Ressler Transport. He enjoys the variety of his responsibilities and the chance to work outdoors.

Adam is a 2000 homeschool graduate and a life-long Lancaster County resi-

dent, now living in Manor Township. He and his wife Janelle are the parents of two sons, Jack, age 8, and

Ilan, age 6. Janelle is a 2003 Solanco graduate and currently home-schools the boys. The family tries to spend as much time as possible together. Cycling, camping and trips to the mountains, particularly the Lake Raystown area are favorite activities of the family. Adam is actively involved with mountain bike and road racing, and the boys are now participants in junior racing. The Erbs are members of Crossway Church of Lancaster and participate in many activities within their church.



**Adam Erb and Family**

## BARB RESSLER'S FAVORITE RECIPE

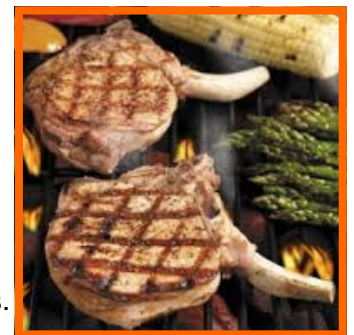
### Grilled Maple Balsamic Pork Chops

#### Dressing

Combine 1/3 cup balsamic vinegar and 1/3 cup maple syrup in blender. While processing, gradually add 1/3 cup olive oil in a steady stream. Yield: 1 cup.



Marinate 4 bone-in pork loin chops (8 oz. each) in 2/3 cup of the dressing. Refrigerate for at least 30 minutes. Cover & refrigerate remaining dressing. Drain & discard marinade. Grill chops, covered, over medium heat for 6-7 minutes on each side or until juices run clear. Brush with 3 Tbsp. reserved dressing during the last 5 minutes. Drizzle with the remaining dressing. Yield: 4 servings.



The dressing can also be used with fresh salad or tossed with strawberries.

## EMAIL INVOICING - SAVE TIME & MONEY



**Save every time you pay your invoice!**

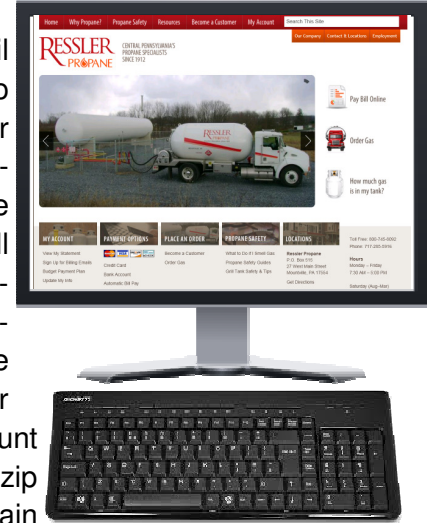
Our new email program is designed to encourage customers to sign up for email delivery of invoices and statements. The program assures not only the timely delivery of invoices and statements, but also allows customers the opportunity to deduct fifty cents from payments if the invoice is paid within terms.

Simply deduct fifty cents from the amount due and we will adjust the account. **Ressler Propane** saves on printing and postage; we are passing that on to you.

We also offer customers the opportunity to sign up for auto-payments through checking accounts, debit cards and credit cards. Payments are automatically made – no need to remember to mail a check and pay postage. Customers can be sure the payment is made within the discount period to receive the additional savings. And the fifty cent discount will apply if customers elect to receive invoices via email. The

new email discount applies to flex-pay or budget participants as well. Many customers also schedule payment through their bank or credit union's bill pay options. Please remember that it can take 10 to 14 business days from the time a payment is processed on the institution's website until **Ressler Propane** physically receives the check payment. With auto-pay through **Ressler Propane**, payment is received promptly and credited to your account the next working day.

To sign up for email invoicing and auto payments, visit our website, [resslerpropane.com](http://resslerpropane.com) to print the sign-up forms, or call our office at 717-285-5916. To view all account activity for the past year, simply enter your Ressler account number and billing zip code under the main menu selection.



## REPLACE YOUR ELECTRIC WATER HEATER WITH A GAS WATER HEATER

As you may have heard, new water heating standards from the Department of Energy went into effect on April 16, 2015. These new standards require that all water heaters be more efficient. For water heaters under 55 gallon, the size and cost changes are insignificant. The biggest changes are for electric water heaters over 55 gallons. Many new homes are built with electric water heaters, because they are less expensive to install. Homeowners may want to consider a gas water heater to replace the electric water heater that came with their house.

- Under the new standards any electric water heater over 55 gallons will have to be a heat pump water heater which will significantly increase the cost of the equipment and installation.
- Electric water heaters have slow recovery times as compared to gas water heaters. You may already experience this if your home's residents take multiple hot showers at one time or take multiple showers back to back. Gas water heat-

ers in comparison have a much higher recovery rate and some options allow for continuous hot water no matter how much the demand.

- Gas water heaters are less expensive to operate. Propane water heaters cost approximately \$25 less per month to operate than comparable electric units. See [Energy.gov](http://Energy.gov) Energy Savings Calculator

If you are considering replacing your water heater, please contact our service department so we can help you determine a suitable gas water heater for you.



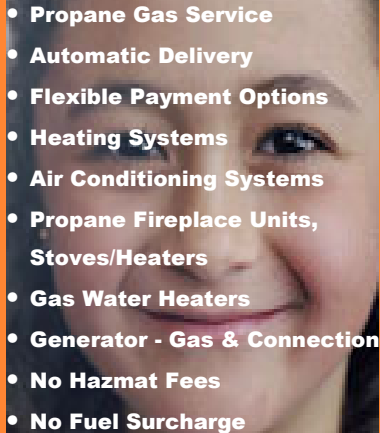
# RESSLER PROPANE

Roy Ressler & Son, Inc.  
PO Box 515, 27 West Main Street  
Mountville, PA 17554  
717-285-5916 • 800-745-8092  
Web Site: [www.resslerpropane.com](http://www.resslerpropane.com)

PRSRT STD  
U.S. POSTAGE  
**PAID**  
LANCASTER, PA  
PERMIT NO. 472

Warming Homes and  
Smiles Since 1912

RESSLER  
PROPANE

- 
- Propane Gas Service
  - Automatic Delivery
  - Flexible Payment Options
  - Heating Systems
  - Air Conditioning Systems
  - Propane Fireplace Units, Stoves/Heaters
  - Gas Water Heaters
  - Generator - Gas & Connection
  - No Hazmat Fees
  - No Fuel Surcharge

Contractor ID# PA008739

**VISIT OUR WEBSITE!**  
[www.resslerpropane.com](http://www.resslerpropane.com)

## FEEL WARM AND COZY...UPGRADE TO A PROPANE FURNACE

Many homes built in the last 30 years are heated with electric heat pumps. This made sense since heat pumps, at that time were, less expensive to install and every house has electricity so no additional fuel sources are required.

There are some distinct disadvantages to a heat pump:

- **The air coming from the registers "feels cold".** The average heating air temperature from a heat pump is 90 degrees or less. When 90 degree air is blowing in your home on a cold day it will "feel cold" and uncomfortable since our body temperature is higher than the air moving in the home.
- **High electric bills.** Heat pumps work best when the outside temperature is above 40 degrees. When the temperature drops below 30 degrees most heat pumps stop and the home is heated by resistance heat which is very costly. For example, in February of 2015 the average temperature in our area was 21 degrees. If you have a heat pump you heated with expensive resistance heat for most of the month of February.

A high efficiency propane furnace can solve both of these problems. A propane furnace produces 120 degree air, which feels warm to the skin on a cold day. Propane uses a simple, quiet combustion process to produce warm air, regardless of the outdoor temperature. Propane is also more economical.

If you are planning to replace an uncomfortable, aging heat pump system, please call our office to see if a propane furnace is the right choice for you.



OLD HEAT PUMP

**VS**



HIGH EFFICIENCY

GAS FURNACE

## CONTACT US WHEN YOUR USAGE OF PROPANE CHANGES

To best serve your propane needs, we ask that you notify our office of any change in propane usage. Let us know when you are adding or removing a propane appliance in your home. If water heating and space heating needs change even a small amount, notifying someone in our office can be very helpful. Even small changes can affect projected delivery times since deliveries are based primarily on past history.